

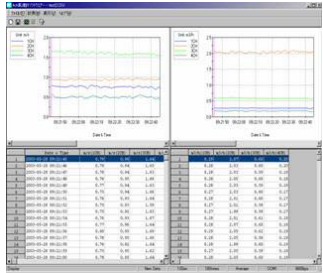
Air Velocity, Air Temperature,  
Relative Humidity,  
Differential Pressure

# 4 Channel Anemomaster Model 1570

NIST Traceable



**Product Efficiency Control**  
**Ventilation Testing**  
**IAQ Investigation**  
**Cleanroom**



**Features:**

- 4CH simultaneous measurement in a compact body.
- Wide probe selection available for various applications.
- Capable of taking measurements at high-time-resolution (0.1 sec)
- RS232C terminal for data logging.

**Benefits:**

- Each channel display can be easily switched over by the touch of a button
- Probe compatibility saves your downtime and shipping cost
- Windows software gives you simultaneous measurement on air velocity and flow rate
- Measurement data saved in text format for easy processing using other software such as Excel

**Main Body Specifications**

Display		LCD display
Data Transfer	Burst Mode	Transfers data of all channels
	Channel Mode	Transfers data of specific channel only
Software Function	Instant Mode	Displays instantaneous values every specified sampling time
	Average Mode	Displays average values of a specified sampling time
Output	Digital	RS 232C (Baud rate 9600bps fixed)
	Analog	0-5 V
Main Body Operation Temperature		41-104°F (5-40°C)
External Dimensions		7.8" x 10.2" x 2.8" (200 x 260 x 70mm)
Weight		5.7 lbs (Approx. 2.6 kg)
Power Supply		AC 85V – 276V 50Hz/60Hz
Standard Kit		RS-232 cable, Power cable, 2xFuse, Data Processing Software

**Probe Specifications**

Model	0962-00 / 0963-00	0964-01 / 0964-02	0965-00 / 0965-01	0965-03 / 0965-04	0965-07 / 0965-08
Sensor Type	Uni-directional	Omni-directional (Needle)	Omni-directional (Spherical)	Omni-directional (Spherical)	Omni-directional (Spherical)
				Mini-temperature-compensation-sensor integrated type	
Measuring Range	20 – 10000 fpm (0.1 – 50 m/s)	20 – 10000 fpm (0.1 – 50 m/s)	20 – 5000 fpm (0.1 – 25 m/s)	20 – 5000 fpm (0.1 – 25 m/s)	20 – 5000 fpm (0.1 – 25 m/s)
Accuracy	+/- 20 fpm (20 – 1000 fpm) +/- 40 fpm (1000 – 2000 fpm) +/- 100 fpm (2000 – 5000 fpm) +/- 200 fpm (5000 – 10000 fpm)	+/- 30 fpm (20 – 1000 fpm) +/- 60 fpm (1000 – 2000 fpm) +/- 150 fpm (2000 – 5000 fpm) +/- 300 fpm (5000 – 10000 fpm)	+/- 30 fpm (20 – 1000 fpm) +/- 60 fpm (1000 – 2000 fpm) +/- 120 fpm (2000 – 5000 fpm)		
Temperature Compensation	41 – 176 F (5 – 80 C)				
Response Time	Approx. 1 sec.	Approx. 3 sec.	Approx. 7 sec.		