

FAST-CAL

Fast-Cal - the product range you designed!

Temperature Range -30°F to 1200°F (-35°C to 650°C)



During a recent Isotech seminar, twenty experienced engineers from many parts of the world were asked to produce their ideal specification for industrial Dry Block Calibrators. Their top ten requirements, in order of priority, are listed below.

The result is our new range of Fast-Cal dry block calibrators.

1. Rugged
2. Light weight
3. Easy to use on site
4. Low cost / high benefit ratio
5. Fast response, high stability
6. Time saving features
7. Multiple sensor testing
8. Software
9. Modern design
10. Compliant with the latest regulations.

Before you buy elsewhere check... **SENSITIVITY TO AMBIENT TEMPERATURE!**

For example, one competitor's block bath changes calibration by 0.8°C if you take the block bath outside from 20°C to 4°C!

We measured one of our block baths. It was less than 0.03°C change from 20 to 0°C with the sides of the block bath removed!



FAST-CAL FEATURES

- Rugged, hard wearing stainless steel case.
- Hygienic with no paint to chip or flake.
- No membrane keypads.
- Lightweight (15 lbs.)
- Easy to use on site. A soft, light weight shoulder case makes transporting the Fast-Cal effortless.
- Fast response, high stability. Isotech has put 24 years of manufacturing and design experience into optimizing the performance of the Fast-Cal. Compare the specifications to our competitors. The block gradients are minimized by non-linear heating and cooling profiles to compensate for end losses to ambient temperature.
- The Fast-Cals are so easy to use you hardly need the manual.
- The Medium and High Fast-Cals incorporate a built-in Insert holder for ultra fast changes and calibration cycles.
- Benefit from the standard PC interface. Extra software is available for automatic calibration.
- The Fast-Cals (excepting the 2010) all have the same sized removable inserts which can be drilled to your exact requirements. A standard multi-hole insert is included with each unit.
- The Fast-Cal design is modern and complies with all the relevant requirements and directives which are applicable.
- The Fast-Cals come with a 5 point NIST traceable calibration certificate.
- Mains power variance immunity has been standard on all Isotech dry block calibrators since their conception. This feature resolves problems with fluctuating power supplies which if not acknowledged causes instability in the block.



Rugged
Product



Light
Weight



Portable
Unit



Easy
to Use



Fast
Response



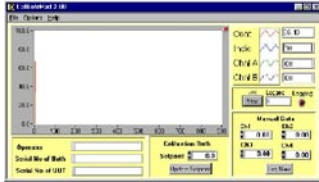
High
Stability

SECRETS OF SUCCESS

The key secret of Isotech's success is knowledge. By applying our insight from the manufacture of National, Primary and Secondary laboratory apparatus to the Industrial Fast-Cal, you get the full benefit of our experience.

SOFTWARE

CalNotePad: Included as standard. This permits you to connect both an indicator and the calibration bath to the PC. You can view data on clear configurable chart displays, log data to file and control the calibration bath.



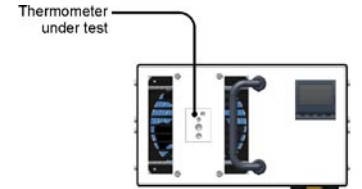
I-cal: A software application that can automatically calibrate up to 16 temperature sensors. It provides an expandable low cost route to automatic calibration – with I-cal Capture you can store pictures (along with time and temperature data) to enable, for example, dial thermometers to be calibrated automatically; return to a set of images of the dial captured at each calibration temperature!

BASIC OR COMPLETE EXPLAINED

Fast-cals are available in basic or complete models

A BASIC DRY BLOCK CALIBRATOR

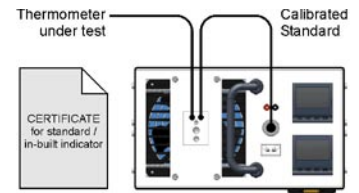
The thermometer under test is compared to the dry block controller value. Useful for moderate temperature ranges and quick testing.



BASIC

AN ISO 9000 CALIBRATION SYSTEM

A thermometer under test is compared to a calibrated standard, for true traceability and clearly meets the requirements of ISO9000.



COMPLETE

Complete models include a semi-standard probe.

FAST-CAL SPECIFICATIONS

Model	Low	Medium	High
Range at 20°C	-35 to +140°C	30 to 350°C	35 to 650°C
Stability	0.02°C	0.03°C	0.05°C
Accuracy - Basic	±0.2°C	±0.3°C	1°C ±0.5°C
Accuracy - Complete	±0.15°C	±0.2°C	±0.5°C
Heating Time	-30 to +140°C in 15 minutes	50 to 350°C in 15 minutes	50 to 650°C in 20 minutes
Cooling Time	+140 to 0°C in 15 minutes	350 to 140°C in 40 minutes	650 to 300°C in 20 minutes
Calibration Capacity	148mm depth 25mmØ	148mm depth 25mmØ	148mm depth 25mmØ
Power	150W	750W	750W
NIST Traceable Certificate	Included		
PC Communications	Included		
Software	Included		
4-20mA Input	Complete Models		
Thermal Switch Test	Complete Model with Software		
Ramps and Dwells	Yes with Software		
Dimensions	228 x 248 x 143mm (9" x 9.8" x 5.6")		
Weight	14 lbs.		

FAST-CAL Inserts

Fixed Block 2010
Model HTM2010 has a fixed block optimized for Hospital Validation Systems.



Ø8.0mm x 145mm deep
Ø6.5mm x 145mm deep
Ø4.5mm x 145mm deep
Ø4.5mm x 145mm deep
Ø4.5mm x 145mm deep

Standard Insert
Low, Medium, High



Ø8.0mm x 140mm deep
Ø6.5mm x 140mm deep
Ø4.5mm x 140mm deep
Ø4.5mm x 140mm deep
M4 Extraction Hole

Blank Insert
Low, Medium, High
Insert without pockets for local machining

Special Insert
Low, Medium, High
Contact Isotech with your requirements