

# DATA LOGGERS

## Simple Logger® II TRMS Clamp-On Current

### Model CL601

Designed for plant and field service applications and for use in harsh environments

#### SPECIFICATIONS

MODEL	CL601
<b>ELECTRICAL</b>	
Channels	One
Input	Split CT – AC Current
Measurement Range	0 to 600Aac
Resolution	0.1A
Accuracy (50/60Hz)	0 to 5A: unspecified 5 to 50A: ±(1% of Reading + 1A) 50 to 400A: ±(1% of Reading + 0.5A) 400 to 600A: ±(3% of Reading + 1A)
Sample Rate	64 samples/cycle
Storage Rate	Programmable from 8 every second to 1 every day
Storage Modes	Start/Stop, FIFO, Extended Recording Mode (XRM™)* and Alarm
Recording Length	15 minutes to 8 weeks, programmable using DataView®
Memory	240,000 measurements (512KB) - The recorded data is stored in non-volatile memory and will be retained even if the battery is low or removed.
Communication	USB 2.0 optically isolated
Power Source	2 x 1.5V AA-cell Alkaline batteries (included)
Battery Life	100 hours to >45 days (dependent on sample rate and recording length)
<b>MECHANICAL</b>	
Dimensions	9.25 x 4.0 x 1.63" (235 x 102 x 41mm)
Max Conductor Size	1 conductor - Ø 1.42" (36mm) 2 conductor - Ø 1.00" (25mm) ea
Weight (with battery)	17.1 oz (485g)
Case	UL94-V0
Vibration	IEC 68-2-6 (1.5mm, 10 to 55Hz)
Shock	IEC 68-2-27 (30G)
Drop	IEC 68-2-32 (1m)

**\*Extended Recording Mode (XRM™)**

This unique recording mode provides the opportunity to continuously record over long periods of time by reducing the stored samples of the oldest data and maintaining matching resolution for the newest data. Each time the memory fills up using XRM™ every other of the oldest stored samples is discarded making room for newer samples. This process continues until the recording is manually stopped.



#### FEATURES

- 0 to 600Arms
- True RMS measurements
- Self contained, no exposed connections
- Overload indication
- Optically isolated USB 2.0 communication cable included
- One button operation
- Alarm function
- 5 LED indicators quickly and clearly display logger status
- Powered by standard Alkaline batteries
- Includes FREE DataView® software for data storage, real-time display, analysis and report generation
- EN 61010-1; 300V CAT IV, 600V CAT III

#### APPLICATIONS

- Machine load monitoring
- HVAC troubleshooting
- Load profiling
- Electrical troubleshooting
- Start-Stop time stamping

CATALOG NO.	DESCRIPTION
-------------	-------------

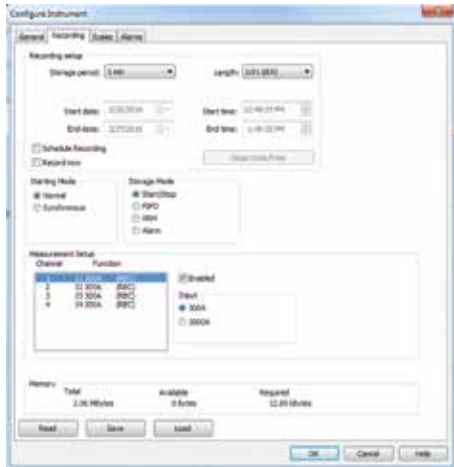
2126.01 Simple Logger® II Model CL601 (1-Channel, TRMS, Clamp-On, 0 to 600Aac, DataView® software)



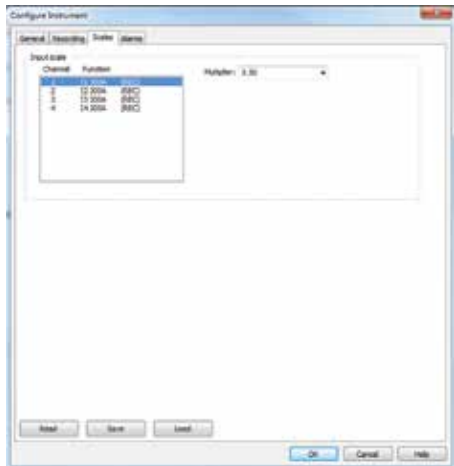
# DataView®

## Data Analysis and Reporting Software

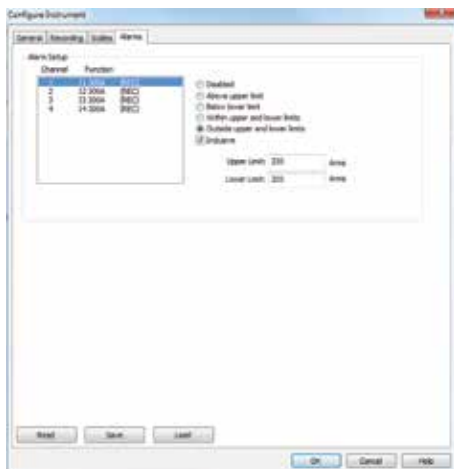
### Typical DataView® Functional Displays



Quick and simple configuration of all functions and settings from one dialog box.



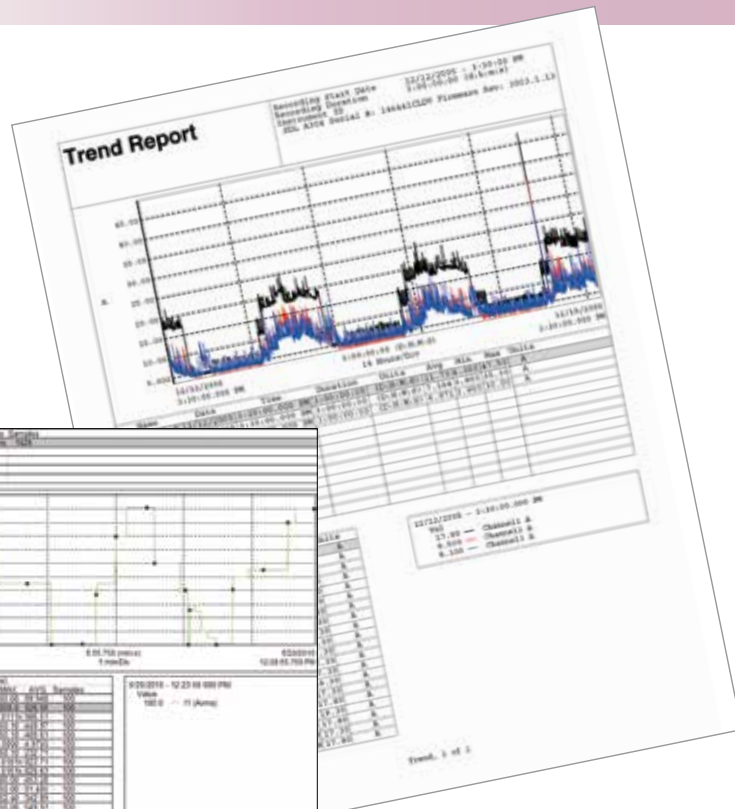
Configure scale functions.



Configure all alarm functions with straightforward selections.

### Configure all data logger functions

- Display and analyze real-time data on your PC
- Configure all data logger functions and parameters from your PC including sample rate, recording length, channel configuration and more
- Create and store a complete library of configurations that can be uploaded to the logger as needed
- Zoom in and out and pan through sections of the graph to analyze the data
- Download, display and analyze recorded data
- Display waveforms, trend graphs, harmonics (AC models) and text summaries
- Create custom views and reports
- Print reports using standard or custom templates you design
- Free software upgrades are available on our website [www.aemc.com](http://www.aemc.com)



Real-time display of all active inputs on computer through DataView® software.