

**Model L564**



**Four channel logger with two AC voltage and two AC current inputs that directly measure and record up to 600V**



**► SPECIFICATIONS**

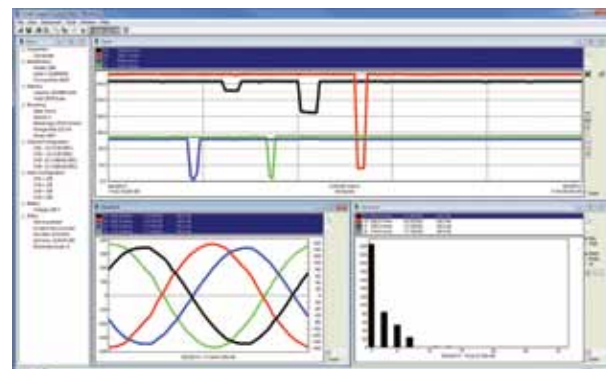
MODEL	L564	
<b>ELECTRICAL</b>		
Channels	Four (two voltage & two current)	
Connection	<b>Current Channel</b>	<b>Voltage Channel</b>
Input Connection	Two 3 pin connector	Three recessed 4mm banana jacks
Input Range	0 to 1VAc (for use with iron core current probes with a voltage output)	0 to 600VAc
Accuracy (50/60Hz)	0 to 10mV unspecified 10 to 50mV: ±(0.5% of Reading + 1mV) 50 to 1000mV: ±(0.5% of Reading + 0.5mV)	0 to 5V unspecified 5 to 50V: ±(0.5% of Reading + 1V) 50 to 600V: ±(0.5% of Reading + 0.5V)
Input Impedance	100kΩ	16MΩ
Sample Rate	64 samples/cycle	
Storage Rate	Programmable from 125ms to 1 per day	
Storage Modes	Start/Stop, FIFO, Extended Recording Mode (XRM™)* and Store on Alarm	
Recording Length	15 minutes to 8 weeks, programmable using DataView®	
Memory	1,000,000 measurements (2MB). The recorded data is stored in non-volatile memory and will be retained even if the battery is low or removed.	
Communication	<i>Bluetooth</i> (Class 2)	
Power Source	4 x 1.5V C-cell Alkaline batteries (included)	
Battery Life	Up to 180 days (dependent on storage rate/recording length)	
<b>MECHANICAL</b>		
Dimensions	5.904 x 5.904 x 3.568" (150 x 150 x 91mm)	
Weight (with battery)	2.1 lbs (0.95kg)	
Case	UL94-V0	
Vibration	IEC 68-2-6 (1.5mm, 10 to 55Hz)	
Shock	IEC 68-2-27 (30G)	
Drop	IEC 68-2-32 (1m)	

**► FEATURES**

- Four input channels (2 voltage & 2 current)
- User programmable recording modes: Start/Stop, FIFO, Extended Recording Mode (XRM™) and Alarm Recording
- Powered by standard Alkaline batteries for a period of up to 180 days
- Stores 1,000,000 measurements
- Includes FREE DataView® software for data storage, real-time display, analysis and report generation
- Includes set of 3 color-coded (red/black/white) 5 ft leads with color-coded alligator clips
- Wireless *Bluetooth* data communication (*Bluetooth* module included)
- Safety Ratings 600V CAT IV; 1000V CAT III

**► APPLICATIONS**

- Single/split phase and 2 phase load monitoring
- Neutral and ground voltage/current monitoring
- Intermittent problem detection
- Harmonic voltage and current monitoring using DataView® software
- Residential power monitoring
- Fault voltage detection
- Load profiling



Real-time view of trend, waveform and status screens.

**See page 51 for optional probes**

CATALOG NO.	DESCRIPTION	PRICE	NIST CALIBRATION
2126.36	Simple Logger® II Model L564 (4-Channel, TRMS, <i>Bluetooth</i> , Voltage & Current, DataView® software)	\$835.00	\$72.00

